



Family Connections

of Southwest Wisconsin

1015 South Madison, Lancaster, WI 53813
155 W. Lewis St. Platteville, WI 53818
1-800-267-1018 608-723-3400
www.familyconnectionsswwi.org

January/February/March 2008

Notes from the Executive Director

New Site In Lancaster

Yes, it's true more changes are ahead for Family Connections! First, we will be moving our Fennimore office to Lancaster. You can look forward to seeing us in Lancaster beginning February 1st, 2007 at 1015 S. Madison St. Mark your calendars for our Open House in Lancaster on Tuesday, February 26th from 11:30—1:00 pm and from 4:30—6:30 pm. Stop in to see our new site, meet the staff, and enjoy some yummy treats as well! The Lancaster Center will have drop-in play, weekly playgroups, a provider/parent workroom, a provider/parent lending library, and quarterly workshops, classes, and trainings.

Second, you are reading our first merged newsletter that includes both CCR&R information and Family Resource information. The result is a newsletter "chock full" of great information that anyone who lives or works with children can enjoy and benefit from.



*Executive Director
Julie Statz*

The third change is a new combined website. Our new web address is www.familyconnectionsswwi.org The new site will be up and running February 1st. The site will be updated quarterly so check it out and let us know if you would like anything added or changed. The website is meant to be for you so we want it to meet your needs.

Last, but not least, both center locations will have new office hours beginning January 1st, 2008 for Platteville, and February 1st, 2008 for Lancaster.

Lancaster Office Hours*

Mon.—Thurs. 8:30—4:30 pm
Fri. 8:30— 12:30 pm

Platteville Office Hours

Tues. & Wed. 3:00 - 7:30 pm
Thurs. 8:30—4:30 pm

*Evenings & Saturdays available by appointment

Open House Lancaster Family Connections

1015 S. Madison St., Lancaster WI 53818

Tuesday, February 26th, 11:30-1:00 pm and 4:30-6:00 pm

Inside This Issue

The Partner Connection	2
Playgroups & Support Groups	3
Workshops/Classes	4-5
Continuing Ed	6
Provider Support & News	7
Calendar of Events	8
Family & Provider Activities	9
Wish List	10

New Website!

www.familyconnectionsswwi.org

Staff E-Mail Addresses:

- Julie Statz, Executive Director
julie@familyconnectionsswwi.org
- Cathy Smith, Resource & Referral Specialist
cathy@familyconnectionsswwi.org
- Jim Lindell, Administrative Assistant
jim@familyconnectionsswwi.org
- Kathy Wetter, Respite, Outreach & Food Program Coordinator
kathyw@familyconnectionsswwi.org
- Marla Holl, Early Childhood Specialist
marla@familyconnectionsswwi.org
- Leslie Clachrie, Early Childhood Specialist
leslie@familyconnectionsswwi.org

The Partner Connection

Grant County Health Department

The most important thing that you can do to keep from getting sick is to wash your hands!!

The best defense against many types of germs is to wash your hands. It is important to wash your hands:

- Before, during, and after you prepare food
- Before you eat
- After handling animals or animal waste
- When your hands are dirty
- After coughing or sneezing
- After changing a diaper
- More often when someone in your home is sick



What is the correct way to wash your hands?

- First, wet your hands and use liquid or a clean bar of soap. Store bar soap on a rack that allows it to drain.
- Next, rub your hands vigorously together and scrub all surfaces.
- Continue for 10-15 seconds or about the length of the Alphabet Song. It is the combination of soap and the scrubbing action that removes germs.
- Rinse well and dry your hands.

If you do not have access to soap and water, waterless hand cleansers may also be used.

For more information on any health related issues you can contact your County Health Department.

Family Connection's Policy on Sick Children

- Please do not bring your child to the center or any programming if he/she has had any fever, vomiting or diarrhea within 12 hours before the activity.
- Please do not bring your child to the center or any programming if she/he has symptoms of a cold such as: nose running with yellow or green mucus, coughing or sneezing.
- Ear infections are usually not contagious if your child has been without a fever and on an antibiotic for at least 24 hours.

Thank you for helping to keep Family Connections a healthy place for all of our children.

Playgroups and Support Groups

Family Programming

Playgroups, a time for interactive fun, that offers children the opportunity to experience both structured and unstructured play. Come join the fun!!! No registration required.

Boscobel Playgroup

Where: Boscobel Public Library Basement

When: Wednesdays, 9:00 — Noon

Closed Dates: 3/26

Lancaster Playgroup

Where: UW-Extension Youth & Ag , Lancaster (Jan. only)
Family Connections, 1015 S. Madison St., Lancaster
(Beginning February 5th)

When: Tuesdays, 9:30 — 11:00 am

Music Dates: 1/22, 2/19, 3/25

Closed Dates: 1/1, 3/18

Platteville Playgroup

Where: O.E. Gray Early Learning Center

When: Thursdays, 9:30 — 11:00

Music Dates: 1/24, 2/21, 3/27

Closed Dates: 1/31, 3/20

Indoor Fun

Where: O.E. Gray ELC. Gym

When: Tuesdays, 4:30 — 6:00 pm

Closed Dates: 1/1, 3/18

Tot Time *****NEW PROGRAM*****

A playgroup for our tiniest Family Connections participants. Tot Time is for children between the ages of birth to 2 years of age. Activities and environment will be age appropriate for your little one. Playgroup will begin in the gym and transition to our family resource room, so the children will have an opportunity for some large motor play.

Where: Platteville, O.E. Gray ELC, Family Resource Room

When: Wednesdays, 9:00 — 10:15 am

Closed Dates: 1/2, 1/30, 3/19



Support Groups

Time For You!

Join us for an evening to share ideas, thoughts, and concerns as we informally discuss parenting topics. Find your own strengths and discover new ways to meet the challenges of parenting.

Where: O.E. Gray ELC, Platteville (2nd Tues. of the month)

Family Connections, Lancaster (1st Tues. of the month)

When: Tuesdays, 6:00—8:00 pm

Lancaster's 1st Time For You, March 4th

Platteville Dates: 1/8, 2/12, and 3/11

Childcare available upon request 723-3400 or 1-800-267-1018

*****January 8th join us for a special "Time For You!"**

Jean Zawacki from Family Advocates will be facilitating "Laughter Yoga". She guarantees that we will all be laughing before the night is over!

Scraping Good Time!



Do you enjoy Scrapbooking or want to learn more about it? Join us on the 3rd Monday of the month for scraping, chatting, sharing, and fun.

Where: Platteville, O.E. Gray ELC, Library

When: 6:00—8:00 pm (3rd Monday of the month)

1/21, 2/18, 3/24 (4th Mon. due to Spring Break)

Sorry no childcare available. Please bring your own scraping supplies.

ADHD Support Group

Group discussion is facilitated by Dr. Scott Whitney, PH. D. Dr. Whitney is a child and family clinical psychologist who works with children, adolescents, and families.

Where: Platteville, O.E. Gray ELC, Library

When: 6:00 — 7:30 pm

Tuesday, January 22nd

Tuesday, March 25th

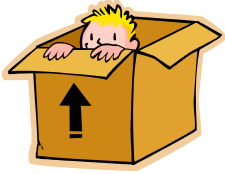
**Please call for child care 723-3400 or 1-800-267-1018

The weather outside is frightful...

If the weather is questionable, please listen to WGLR 97.7 FM for cancellations. If the school district that the program is located in has cancelled classes, our programs and office hours will be cancelled as well.

Workshops and Classes

Family Fun



Dinner & A Drive-In

Looking for a night out as a family? How about going to the "drive-in movies", complete with dinner? You'll be constructing a vehicle of your choice out of a large cardboard box that will be provided. Oh, but of course you will be using your imagination to construct a car, truck, or bus etc., and then you will pull it up to our indoor drive-in movie theater. The Family Connections Cinema is located inside the Platteville, O.E. Gray ELC Gymnasium. Pizza, movie, and all supplies will be provided by Family Connections.

When: Friday, February 1st from 6-8 pm

Please register by Tuesday, January 29th

(register early workshop fills quickly!)

723-3400 or 1-800-267-1018

Making Music

Join the staff at Family Connections as we share ideas for bringing music into your home to share with your little ones. We'll be making instruments and sharing simple finger plays, chants, and rhymes that children of all ages will enjoy. Bring your child along for the fun, they can participate and join in a "Music Parade" at the end of the evening.

Offered Two Times!

Wednesday, March 5th 6:00—7:30 pm

Where: Platteville, O.E. Gray ELC,
Family Resource Room

AND

Monday, March 3rd 10:00-11:30 am

Where: Family Connections, Lancaster

*Call to Register by Thursday, February 28th

723-3400 or 1-800-267-1018

(Volunteers will be available to help with infants while you work with your older child)



Workshops

Wills and Guardians

Receive expert information and opinions related to the legal aspects of planning for the care of your children if you and/or your spouse meet an untimely death. Knowing what needs to be done and what your wishes are can be both comforting and reassuring during a very stressful and confusing time.

Facilitated By: Attorney, Adam Rassmussen

When: Thursday, March 27th 6:00-7:30 pm

Where: Family Connections, Lancaster

Please call by Monday, March 24th to register. Childcare available!

1-800-267-1018 or 608-723-3400



He Said, She Said

Explore and learn effective communication with your partner with Joanne M. Beraldi, MSW Licensed Clinical Social Worker, and Licensed Marriage and Family Therapist. Whether we want to admit it or not EVERY couple can benefit from effective communication tactics with the opposite sex.

You will get more from the workshop if your partner attends with you, however that is not a requirement.

When: Wednesday, March 12th, 6:30 -8:00 pm

Where: Platteville, O.E. Gray ELC, Library

***Please call to register by Thursday, March 6th

Childcare available! 1-800-267-1018 or 723-3400

Parent Advisory Group

Family Connections is looking for parents/families that would be interested in sitting on our Parent Advisory Council. The Parent Advisory Council is a group of vested individuals who are interested in helping Family Connections continue its strong presence in Grant County. Advisory members will have a voice in future programming, fundraising, public awareness and promotion, and other projects that help keep Family Connections working towards meeting all of our families needs.

Call 1-800-267-1018 or 723-3400 and ask for Julie for more information.

Advisory council meets every other month.

Workshops and Classes

Parents and Providers

Terrific Toddlers

Join Family Connections Staff as we bring you a four week parenting series entitled "Terrific Toddlers". Each week we will discuss the triumphs and challenges of raising your toddler. You can participate in all four weeks or only attend the sessions that are of particular interest to you. **Registry Labels Available
To register please call 1-800-267-1018 or 608-723-3400. Childcare is available upon request.

When: Wednesdays, Jan. 23rd, 30th, Feb. 13th, 20th 6:00-7:30 pm

Where: Platteville, O.E. Gray ELC, Library

Wednesday, Jan. 23rd The Toddler-What to Expect

Developmental milestones, Social/Emotional Development, Gross Motor Development, Language Development

Wednesday, Jan. 30th Parenting the Toddler

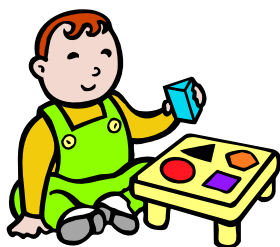
Positive Parenting, Discipline, Establishing Routines

Wednesday, February 13th Toilet Training

When to start, Do's and Don'ts, of Toilet Training, Sexual Development, Question and Answer Format

Wednesday, February 20th Feeding Your Toddler

Toddler Diet, Nutrition, Growth, Tactics for the Table



Child's Play

Are you stumped on what interests your child? Do you know some creative ways to help your child develop through play? If you need some ideas on how to beat the winter blues, join us for an opportunity to share ideas that will stimulate and teach your child to use his own natural creativity through play.

In this workshop we will discuss how crafts and cooking are stimulating to a child as is dramatic play and sensory exploration. You will learn the art of storytelling and how to incorporate music into your child's life. You will learn to creatively "teach" your child how to play using all these different methods. Since you are your child's first teacher remember, "Play is the work of children". Is your child working hard or hardly working? **Registry Labels Available. Childcare available upon request.

Join us for an enjoyable evening as Family Connections helps you re-live your second childhood and learn how to play all over again!

When: Wednesday, January 16th , 6:00—7:30 pm

Where: Platteville, O.E. Gray ELC, Library

Please call 1-800-267-1018 or 723-3400 to register, by Fri. Jan. 11th



Workshops/Continuing Education

Provider Classes/Workshops

Fundamentals of Infant and Toddler Care

We will be offering this class to those who would like to become certified or licensed child care providers. If you know someone who may be interested call Family Connections to get the registration information. The class dates and times are as follows:

Dates: January 22, 24, 29, 31
February 5, 7, 9

Location: To be determined

Time: Weekdays: 6:00- 9:00 pm.

Sat.: To be determined

Cost: \$75 (includes book) due at the time of registration.
Class starts soon-call today!
1-800-267-1018 or 723-3400

Check out our new website for provider training quarterly updates at:
www.familyconnectionsswwi.org
Website will be up and running by
February 1st, 2008

Fundamentals Of Family Childcare

This course covers the business side of running a family daycare.

When: Dates to be determined

Call to be put on a registration list:
1-800-267-1018

Science For Young Thinkers

Better Kid Care Satellite Program

When: March 27th, 6:00-8:00 pm

Where: Dodgeville

Call 608-935-0391 for more information & to register.

Registry labels available



Provider Classes/Workshops

Conversations with Families about Developmental Concerns-

"Why is this so hard?"

When: Friday, January 18th or Saturday, February 9th

(choose either the Friday or Saturday date)

9:00-9:15 Registration

9:15-3:30 Workshop

Where: CESA 3, Fennimore

Cost: \$15.00 lunch and materials included

Registry labels available

Call 1-608-822-3276

Wisconsin Model Early Learning Standards

This training will include an overview of the contents and design of the Wisconsin Model Early Learning Standards (WMELS) and how to apply them within any early learning classroom setting. Training activities will emphasize:

- How to plan for the "whole child" with WMELS as a guide.
- How to plan developmentally appropriate activities to carry out learning goals supported by the WMELS.
- How to assess children's growth and development using both formal and informal assessment strategies.

When: Saturday, February 2nd and 16th from 8-3:30 pm

Where: CESA 3, Fennimore (15 hrs of Continuing Ed!)

***Call 1-800-267-1018 for more details and to register

CPR Training

Lancaster, Grant County Health Department

Wednesday, March 12th, 5:45-9:00 pm

Dodgeville, Upland Hills Health

Call for upcoming classes at 608-935-7150

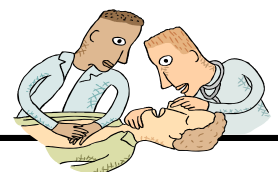
Fennimore, Southwest Technical College

Call 1-800-362-3322

Viroqua, Western Wisconsin Technical College

Heartsaver CPR, & Heartsaver Pediatric FA/CPR are available.

Call 608-785-9267



Provider Support & News

Provider Advisory Council

Family Connections has formed a Provider Advisory Council to help providers have a voice in future programming, fund-raising, public awareness and promotion, and other projects that will help providers in and throughout our 6 county service area (Grant, Crawford, Vernon, Richland, Iowa, and Lafayette). Currently, we have provider representation from the following counties:

Crawford County: Brenda Wagner 608-875-5437

Grant County: Kristin Holman 608-723-2852

Lafayette County: Sharon Ludlum 608-762-5175

Richland County: July Bobb 608-739-9156

Iowa County:

Vernon County:

We are looking for representatives for Iowa and Vernon counties, please call Family Connections if you are interested. Provider Advisory Council meets 2 times a year.

If you have ideas for programming, speakers, trainings, conferences, or funding please contact your county representative or you may call me, Julie Statz, Executive Director, at Family Connections, 1-800-267-1018 or email me at:

julie@familyconnectionsswwi.org

Grant County Provider Support Group P.A.C.T.

(Providers Actively Connecting Through Teaming)

Pre-registration is required, please call Kristin Holman at 608-854-2054 to register. Registry Labels will be provided.

All meetings are held in Platteville or Lancaster from 6:30—8:30 pm

January 10th

Topic: Provider's Night Out/Christmas Party

February 7th

Topic: Make & Take/Stamping-Up Demonstrator

Speaker: Everyone please bring a Valentine Project idea with you & supplies to make

Location: Mound City Motor Branch meeting room Pine St., Platteville (will confirm after January 1, 2008)

March 13th

Topic: Putting Children First...When you're Parenting Apart (Parenting after Divorce)

Speaker: Bev Doll, Grant Co. Family Living Agent

Location: Grant County Social Services Building, Lancaster

Contact your local county U.W. Extension Family Living Agent for more great workshops!

Grant County: Bev Doll 723-2125

Crawford County: Jane Schaaf 326-0227

Richland County: Peggy Olive 647-6148

Vernon County: Karen Ehle-Traastad 637-5276

Iowa County: Sarah Weier 935-3354

Lafayette County: Mary Knellwolf 776-4820

Director's Support Group

If you are interested in getting together with other group center directors to see how things are handled in other centers and share ideas. Then take this opportunity to network with others in the same business.

When: Last Tuesday of each month

Where: Unique Café, Boscobel

Contact Debby Lynch for more information at 608-647-5239

21st Annual UW-Platteville Early Childhood Conference

Celebrate & Create Connections

When: Saturday, March 29th, 2008

Where: UW-Platteville Campus

Keynote: Stuart Stotts

General Session: Karen McCaa

Contact Continuing Education for more information or to register at 608-342-1314 or 1-888-281-9472

www.uwplatt.edu/cont_ed

Watch for more information in the coming weeks

Substitutes Needed

If you, or someone you know would be interested in substituting at area regulated day-cares, call us for more information and to be put on a "Call List"!

1-800-267-1018

Provider Support Groups In your Area?

Call 1-800-267-1018 for more information

Calendar of Events

January 2008

Wed. 1/2	Playgroup(B)
Thurs. 1/3	Playgroup(P), Family Lit (B)
Mon. 1/7	Family Lit(M)
Tues. 1/8	Playgroup(L), Indoor Fun(P), Time For You(P), Family Lit(P)
Wed. 1/9	Tot Time(P), Playgroup(B) Family Lit(P)(B)
Thurs. 1/10	Playgroup(P), Family Lit(B)
Mon. 1/14	Family Lit(M)
Tues. 1/15	Playgroup(L), Indoor Fun(P), Family Lit(P)
Wed. 1/16	Tot Time(P), Playgroup(B) Family Lit(P)(B), Child's Play(P)
Thurs. 1/17	Playgroup(P), Family Lit (B)
Fri. 1/18	CESA, Having Difficult Conversations, Fennimore
Mon. 1/21	Scrapbooking(P), Family Lit(M)
Tues. 1/22	Playgroup(L), Indoor Fun(P), Family Lit(P), ADHD(P)
Wed. 1/23	Tot Time(P), Playgroup(B) Family Lit(P)(B), Terrific Toddler(P)
Thurs. 1/24	Playgroup(P), Family Lit(B)
Mon. 1/28	Family Lit(M)
Tues. 1/29	Playgroup(L), Indoor Fun(P), Family Lit(P)
Wed. 1/30	Playgroup(B), Family Lit(P)(B) No Tot Time, Terrific Toddlers(P)
Thurs. 1/31	No Playgroup(P), Family Lit(B)

March 2008

Mon. 3/3	Making Music(L), Family Lit(M)
Tues. 3/4	Playgroup(L), Indoor Fun(P), Family Lit(P), Time For You(L)
Wed. 3/5	Tot Time(P), Playgroup(B) Family Lit(P)(B), Making Music(P)
Thurs. 3/6	Playgroup(P), Family Lit(B)
Mon. 3/10	Family Lit(M)
Tues. 3/11	Playgroup(L), Family Lit(P), Indoor Fun(P), Time For You(P)
Wed. 3/12	Tot Time(P), Playgroup(B) Family Lit(P)(B), "He said, She said"(P)
Thurs. 3/13	Playgroup(P), Family Lit(B)
Mon. 3/17—Fri. 3/21	SPRING BREAK NO PROGRAMMING, except 3/17 and 3/10 Family Lit in (M) & (B)
Mon. 3/24	Scrapbooking(P), No Family Lit(M)
Tues. 3/25	Playgroup(L), Indoor Fun(P), Family Lit(P), ADHD(P)
Wed. 3/26	Tot Time(P), Family Lit(P), No playgroup(B), No Family Lit(B)
Thurs. 3/27	Playgroup(P), Wills and Guardians(L), NO Family Lit(B)
Sat. 3/29	UW-Platteville Early Childhood Conf.
Mon. 3/31	Family Lit(M)

February 2008

Fri. 2/1	Dinner & A Drive In(P)
Sat. 2/2	WMELS, CESA 3, Fennimore
Mon. 2/4	Family Lit(M)
Tues. 2/5	Playgroup(L), Indoor Fun(P), Family Lit(P)
Wed. 2/6	Tot Time(P), Playgroup(B) Family Lit(P)(B)
Thurs. 2/7	Playgroup(P), Family Lit(B)
Sat. 2/9	CESA, Having Difficult Conversations, Fennimore
Mon. 2/11	Family Lit(M)
Tues. 2/12	Playgroup(L), Indoor Fun(P), Time For You(P), Family Lit(P)
Wed. 2/13	Tot Time(P), Playgroup(B) Family Lit(P)(B), Terrific Toddlers(P)
Thurs. 2/14	Playgroup(P), Family Lit(B)
Sat. 2/16	WMELS, CESA 3, Fennimore
Mon. 2/18	Scrapbooking(P), Family Lit(M)
Tues. 2/19	Playgroup(L), Indoor Fun(P), Family Lit(P)
Wed. 2/20	Tot Time(P), Playgroup(B) Family Lit(P)(B), Terrific Toddlers(P)
Thurs. 2/21	Playgroup(P), Family Lit(B)
Mon. 2/25	Family Lit(M)
Tues. 2/26	OPEN HOUSE(L), Playgroup(L), Family Lit(P)(B), Indoor Fun(P)
Wed. 2/27	Tot Time(P), Playgroup(B)

Family Literacy

For more information about our Family Literacy and Adult Basic Education programs please call Family Connections at 1-800-267-1018 or 608-723-3400.

Platteville Hours: Tuesdays and Wednesdays 3:00-7:30 pm
O.E. Gray ELC

Boscobel Hours: Wednesdays 9:00-Noon (Playgroup too!)
Thursdays 1:00-7:00 pm
Boscobel Public Library Basement

Muscoda Hours: Mondays 1:00-7:00 pm
St. John's Elementary School

Respite Care

Respite care is available for any family that would like relief from the day to day stressors of parenting. Please call Family Connections at 1-800-267-1018 or 608-723-3400 for more information.

Providers We are always looking for certified and licensed providers to help with Respite Care. Please call our Respite Coordinator, Kathy Wetter, for details 608-723-3400.

Family/Provider Activities

Winter Fun

Activities/Crafts:

Finger Paint: Mix 4 Tablespoons of sugar and $\frac{1}{2}$ cup corn-starch in a pot. Add 2 cups of cold water. Cook mixture over medium heat, stirring until it becomes thick. When the mixture is cool, spoon it into small containers and add food coloring.

Snow Measuring Stick—What you need; a paint stick (spray painted/painted white), felt, fabric, pipe cleaners, markers, and/or foams, ruler. Once paint stick has dried, decorate with anything really to give it the snowman look-- hat, scarf, pipe cleaner arms, nose, eyes, mouth. Using the ruler mark off inches on the side and write the corresponding numbers. Stick in snow to measure how deep it is.

Oh Snowy Night—What you need; a black or dark blue piece of construction paper and chalk. Draw a night scene with snow and trees. Don't forget the moon and the stars.

Sock man—What you need; an old sock, some rice or beans, elastic band, pillow stuffing, fabric, buttons, cotton ball. Put about a cup of rice or beans at the bottom of sock. Fill the rest of the sock up with pillow stuffing, leaving a few inches of sock at the top. Put the elastic band on tight to hold in the stuffing. Invert the top part of the sock to make a hat. Decorate your snowman with eyes, nose, mouth, buttons, and scarf. Even add a pom pom or cotton ball to the hat.

Snowflake—What you need; 4 craft sticks/Popsicle sticks, white or light blue paint, glue, glitter or buttons, a piece of ribbon. Glue craft sticks together making two x's. Spray paint or paint white or light blue. Decorate any way you like, with glitter, buttons, etc... Attach a piece of ribbon to the top. Makes beautiful ornaments or just great for hanging around the house.

Bag Village—What you need; some lunch bags, old newspapers, scissors, glue, markers, and some cars. On lunch bags draw building scenes, like doors, windows, flower boxes, shop signs, etc... Stuff the bags with paper. Fold down the top to make a nice roof. Tape the bags shut. Use the buildings with cars or small figures.



Music and Recipes

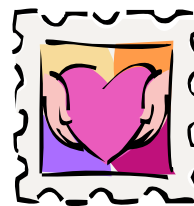
SNOW

- Snow on my forehead, (Touch forehead)
Snow on my knee, (Touch knee)
Snow on my glasses, (Touch eyes)
Getting hard to see.
Snow on my boots, (Touch shoes)
Snow on my hair, (Touch hair)
Snow on my mittens, (Touch hands)
Snow everywhere. (Wave hands all over)

1 Little, 2 Little, 3 Little Hearts

(tune: 1 Little, 2 Little, 3 Little Children)

- 1 little, 2 little 3 little hearts
(put finger sup as you sing)
4 little, 5 little 6 little hearts,
7 little, 8 little, 9 little hearts,
10 little hearts, bring love on
Valentine's Day!



Recipes:

Meringue Snowmen: Sugar, egg whites, salt, currants or mini chocolate chips. Preheat oven to 200 degrees. Spray vegetable oil on a cookie sheet. Carefully separate 2 large eggs by dropping the egg whites into a glass bowl. Add a pinch of salt and beat until fluffy. Gradually add $\frac{1}{2}$ cup sugar. Beat until firm peaks form. Drop three spoonfuls onto the cookie sheet. Use the back of a spoon to make a snowman shape. Decorate with currants or mini chocolate chips. Bake them for 2 hours or until lightly browned. Store in an airtight container.

Fruit Bricks:

3 pkgs. (1/4 oz. each) unflavored gelatin
3/4 cup boiling water
1 can (12oz) frozen OJ
Dissolve gelatin in boiling water. Add OJ concentrate and stir until mixed. Lightly spray a 9x13 inch pan with nonstick cooking spray. Pour mixture into pan. Chill for several hours. Cut into squares for building blocks or use cookie cutters to make interesting shapes. (Hearts for Valentine's Day!)



Family Connections

of Southwest Wisconsin

1015 S. Madison St. Lancaster, WI 53818
155 W. Lewis St. Platteville, WI 53818
1-800-267-1018 608-723-3400
www.familyconnectionsswwi.org

PRSR STD
AUTO
US POSTAGE PAID
LANCASTER, WI
PERMIT NO. 18

A Joint Service of These Fine Agencies:



Platteville Thrift Shop



Children's Trust Fund

Grant supported program



Family Connections

Board of Directors:

Robin Bernhard	Jeanne Gander-Barr	Stacey Place
Lynn Crooks	Martha Harrison	Scot Simpson
Lori Dilley	Rita Luna	Tonia Wagner
Bev Doll	Peggy Olive	Laurie Walker
Karen Ehle-Traastad	Adam Rasmussen	Sarah Weier

Staff

Julie Statz, Executive Director
Cathy Smith, Resource and Referral Specialist
Jim Lindell, Administrative Assistant
Kathy Wetter, Respite, Outreach & Food Program
Coordinator
Marla Holl, Early Childhood Specialist
Leslie Clachrie, Early Childhood Specialist

Wish List

Family Connections appreciates any donations of items or time that families, businesses, or individuals can make to help offset other expenses involved in helping us meet our goals. Thank You!

- Kleenex/Tissues
- Baby diaper wipes
- Napkins
- Paper plates (large & small)
- Frozen 100% Juice
- Toilet tissue
- Raisins
- Snacks—nonperishable
- Flour
- Postage Stamps
- Liquid dish soap
- Old/Used cell phones
- Old/Used printer ink cartridges
- Copy paper
- Thank you cards
- Hand wipes
- Chlorox wipes
- Elmers school glue
- Shaving cream
- Dixie cups
- Cotton balls
- Food coloring
- Marshmallows
- Wooden clothes pins
- Paper towels
- Envelopes
- Hand Sanitizer