



Family Connections

of Southwest Wisconsin

1015 South Madison, Lancaster, WI 53813
155 W. Lewis St. Platteville, WI 53818
1-800-267-1018 608-723-3400
www.familyconnectionswwi.org

Office Hours:
Lancaster Mon.-Thurs. 8:30-4:30 Fri. 8:30-12:30
Evenings/Sat. by appt.
Summer Hours Lancaster Office Open Only:
6/1/08-8/31/08 Mon.-Thurs. 8:30-4:30
Platteville Tues. Wed. 3:00-7:30p.m. Thurs. 8:30-4:30

April/May/June 2008

Notes from the Staff: Kathy Wetter

Two Special Events to Celebrate April 2008!

During April we have two very special reasons to celebrate our children... the **Week of the Young Child (April 13- 19)** and **Prevent Child Abuse (all month long)**. These two nationally recognized events are positive ways for us to focus public attention on the needs of our young children and their families and to do our part to advocate for the children in our community.

While the Week of the Young Child, which is sponsored by the National Association for the Education of Young Children (NAEYC), is only recognized for a week during April, the focus of this week continues year round for the early childhood programs that help meet the needs of the children. We, as a community, should strive to be involved in the lives of children and commit ourselves to ensuring that each and every child experiences the type of environment - at home, at child care, at school, and in the community—that will promote early learning.

The theme for the Week of the Young Child 2008 is "Bring Communities Together for Children—Children Bring Communities Together." Let's do our part to get involved in this national celebration!

April is also Child Abuse & Neglect Prevention Month. And while this is the month that is recognized nationally for the prevention of child abuse, child abuse continues to be on the rise throughout the country, and needs to be recognized daily.

A quote that I hold near and dear to my heart states, "That it should never hurt to be a child." If this is true, why then do statistics continue to climb and the media report to us almost daily, of children being hurt and even dying, at the hands of their parents or caretakers? Don't think that child abuse isn't real and don't think that it's not happening in your community. It is, and we must advocate for those little people that do not yet have a voice and can cry out for help.

Child abuse is more than physical injury to a child. Along with physical abuse, neglect, sexual and emotional abuse are other types of abuse that often occur which silence the children in our community.

Child abuse issues need our attention and children need our help. We must do our part to promote early childhood education, parent education, research, training, and public education to address the risk factors that can lead to child abuse in our community. We must offer support to families at risk and be advocates for the children in our community. We must do our part to make sure that all children should be able to say, "It should never hurt to be a child."

Family Connections and Family Advocates are teaming up to bring awareness and advocacy for children to our local communities. You can help by wearing a blue ribbon during the month of April and spreading the word about "Child Abuse and Neglect Prevention Month".

For more information on how you can be an advocate for the children in our community please contact the staff at Family Connections. Together we can make a difference in the life of a child.

Kathy Wetter, Respite/Outreach Coordinator



Respite and Outreach
Coordinator
Kathy Wetter

Inside This Issue

The Partner Connection	2
Playgroups & Support Groups	3
Workshops/Classes	4-5
Continuing Ed	6
Provider Support & News	7
Calendar of Events	8
Family & Provider Activities	9
Wish List	10

New Website!

www.familyconnectionswwi.org

Staff E-Mail Addresses:

- Julie Statz, Executive Director
julie@familyconnectionswwi.org
- Cathy Smith, Resource & Referral Specialist
cathy@familyconnectionswwi.org
- Jim Lindell, Administrative Assistant
jim@familyconnectionswwi.org
- Kathy Wetter, Respite, Outreach & Food Program Coordinator
kathyw@familyconnectionswwi.org
- Marla Holl, Early Childhood Specialist
marla@familyconnectionswwi.org
- Leslie Clachrie, Early Childhood Specialist
leslie@familyconnectionswwi.org

CAR SEAT SAFETY AND THE LAW

Wisconsin Car Seat Law

Children must be properly restrained in a child safety seat until they reach the age of 4, and in a booster seat until age 8. The law includes the following four-step progression for effective child safety protection in vehicles.

- 1. Rear-facing child safety seat in back seat** (must be in the back seat if the vehicle has a back seat) **is required when the child :**
 - Is less than 1-year-old or
 - Weighs less than 20 pounds
- 2. Forward-facing child safety seat in the back seat** (must be in the back seat if the vehicle has a back seat) **is required when the child:**
 - Is at least 1-year-old but less than 4-years-old
 - Weighs at least 20 pounds but less than 40 pounds
- 3. Booster seat is required when the child:**
 - Is at least 4-years old but less than 8-years-old
 - Weighs at least 40 pounds but less than 80 pounds
 - Is not 57-inches (4-feet, 9-inches) or taller
- 4. Safety belt is required when the child:**
 - Is 8-years old or older or
 - Weighs 80 or more pounds or
 - is 57-inches or taller



(Information from Department of Transportation, Wisconsin)

For more information please contact our staff at Family Connections!

Family Connections has trained car seat technicians on staff that are trained to insure that your car seat is installed properly.

Please call to set up a FREE appointment today!

1-800-267-1018 or 1-608-723-3400

Family Connection's Policy on Sick Children

- Please do not bring your child to the center or any programming if he/she has had any fever, vomiting or diarrhea within 12 hours before the activity.
- Please do not bring your child to the center or any programming if she/he has symptoms of a cold such as: nose running with yellow or green mucus, coughing or sneezing.
- Ear infections are usually not contagious if your child has been without a fever and on an antibiotic for at least 24 hours.

Thank you for helping to keep Family Connections a healthy place for all of our children.

Playgroups and Support Groups

Family Programming

Playgroups, a time for interactive fun, that offers children the opportunity to experience both structured and unstructured play. Come join the fun!!! No registration required.

Boscobel Playgroup

Where: Boscobel Public Library Basement

When: Wednesdays, 9:00 – Noon

Closed Dates: 6/4, 7/2

Lancaster Playgroup

Where: Family Connections, 1015 S. Madison St., Lancaster

When: Tuesdays, 9:30 – 11:00 am

Music Dates: 4/15, 5/13, 6/17

Closed Dates: 7/1

Platteville Playgroup

Where: O.E. Gray Early Learning Center (April 3rd–May 29th)

Please Note: May 29th will be an outside playgroup held in the O.E. Gray Playground. If raining or too cold, playgroup will be cancelled.

****Beginning June 5th Platteville Summer Playgroups will be held at Legion Park**

When: Thursdays, 9:30 – 11:00

Music Dates: 4/17, 5/15, 6/19

Closed Dates: 7/2

Indoor Fun

Where: O.E. Gray ELC. Gym

When: Tuesdays, 4:30 – 6:00 pm

Last Date: Tuesday, May 20th

Tot Time

A playgroup for our tiniest Family Connections participants. Tot Time is for children between the ages of birth to 2 years of age. Activities and environment will be age appropriate for your little one. Playgroup will begin in the gym and transition to our family resource room, so the children will have an opportunity for some large motor play.

Where: Platteville, O.E. Gray ELC, Family Resource Room

When: Wednesdays, 9:00 – 10:15 am

Last Date: May 28th



Support Groups

Time For You!

Join us for an evening to share ideas, thoughts, and concerns as we informally discuss parenting topics. Find your own strengths and discover new ways to meet the challenges of parenting.

Where: O.E. Gray ELC, Platteville (2nd Tues. of the month)

Family Connections, Lancaster (1st Tues. of the month)

When: Tuesdays, 6:00–8:00 pm

Lancaster Dates: 4/1, 5/6, and 6/3

Platteville Dates: 4/8 and 6/10

**Please call by the Monday prior to programming to register and for FREE childcare 723-3400 or 1-800-267-1018

*****May 6th join us for a special "Time For You!"**

Jean Zawacki from Family Advocates will be facilitating "Laughter Yoga". She guarantees that we will all be laughing before the night is over!

Scrapping Good Time!

Do you enjoy Scrapbooking or want to learn more about it? Join us on the 3rd Monday of the month for scrapping, chatting, sharing, and fun.

Where: Platteville, O.E. Gray ELC, Library

When: 6:00–8:00 pm (3rd Monday of the month)

4/21, 5/19 "No Scrapping Good Time" in June.

Sorry no childcare available. Please bring your own scrapping supplies.



ADHD Support Group

Group discussion is facilitated by Dr. Scott Whitney, PH. D. Dr. Whitney is a child and family clinical psychologist who works with children, adolescents, and families.

Where: Platteville, O.E. Gray ELC, Library

When: 6:00 – 7:30 pm

Tuesday, May 20th

**Please call for child care 723-3400 or 1-800-267-1018

*****NEW***NEW***NEW***NEW***NEW***NEW***NEW*****

S.P.I.N.

(Single Parents in Need)

Family Connections is offering a **NEW** support group for single parents. Parenting is difficult enough with two parents... single parenting is just down right **HARD**. Join us at O.E. Gray Elem. to share our struggles and triumphs of going at it alone.

Tuesday, April 15th 6:00-7:30 p.m.

Wednesday, May 21st 6:00-7:30 p.m.

Free Childcare Available! Please call to register or with ?'s 1-800-267-1018

Workshops and Classes

Family Fun



Just Me & My Dad

Grab your dad and head for Family Connections, on **Saturday, May 3rd** for a fun morning making a special Mother's Day gift. This workshop will be 1 1/2 hours of "Just Me & My Dad" time for your toddler and/or preschool age child. You will get to work on a special gift for Mom or Grandma. So, forget about shopping for that special Mother's Day gift, you can make one with Family Connections. All supplies will be provided, dress appropriately because you may get a little messy.

Location: Family Connections, O.E. Gray, Platteville

When: Saturday, May 3rd, 10:00 - 11:30

Please call 1-800-267-1018 to pre-register by Wednesday, April 30th

Boredom Busters

"I'm Bored" Boredom Busters for the Lazy Days of Summer
Join Family Connections at Legion Park in Platteville, as we enjoy an evening of summertime fun with stations of activities and games. Yard games, travel games, balloon toss, and much more will all be a part of the fun, as we gear up for summer. The Platteville Public Library will be sharing information on summer programs and resources. Don't miss the fun! There will be tons of door prizes and every family will leave with a bag of "Boredom Busters".

Date: Tuesday, May 27th

Time: 5:00-7:00 pm

Location: Legion Park, Platteville

Hot dogs and homemade ice cream will be provided. Rain or Shine!

Call Family Connections at 723-3400 or 1-800-267-1018 to register!

Sponsored by: Platteville Safe and Stable Committee
(Platteville Schools, Family Connections and Family Advocates)



Workshops

Dinner on a Budget



Looking for inexpensive and easy meals? Join Family Connections for an evening of ideas and sampling. Make sure you come hungry because we will be sampling many of the recipes (children can eat too!). You'll leave with great ideas,

recipes, a smile on your face and full tummy!

Facilitated By: Ione Meoska, Nutrition Educator

UW-Extension, Grant County

When: Wednesday, April 16th 5:30-7:00 p.m.

Where: Family Connections, O.E. Gray ELC, Platteville

Please call by Monday, April 14th to register. Childcare available!

Pamper Mom

We all need to give ourselves some TLC from time to time. So make an 'appointment' with Family Connections to pamper yourself! Join us for an evening of relaxation and rejuvenation where you will have time to relax with a massage, try out new nail polish, make-up and hairstyles. You will leave feeling refreshed and energized. Family Connection's staff and area professionals will facilitate this event. Fill out a 'prescription' for door prizes too. The space is limited, so make your appointment soon!

When: May 13

Time: 6:30 - 8:00 pm

Where: Family Connections, O.E. Gray Platteville



Family Connections Recipe Book

The recipe book is still in the "production" stage, we still need a few more recipes to help us along....

Looking for recipes in the areas of :

- Snacks
- Kid Friendly" recipes
- Casseroles
- Salads

Send recipes to
recipes@familycentergrantcounty.org

Workshops and Classes

Parents and Providers



Crafts for Kids Workshop

Come join us to "make and then take" great craft projects for your kids at home or at your child care program

When: Thursday, April 10th

Time: 6-7:30

Where: Family Connections Lancaster, 1015 S. Madison St.

To register call: 1-800-267-1018

Registry Labels for 1 hr. available for child care providers



Lending Library



Stop in and see our new and improved Lending Library! Our toys, kits, and resources have expanded two-fold! Both the Platteville and Lancaster sites have more to offer. We are also working on computerizing the lending library to make selection and check out easier.

Butterfly Bites

- 2 stalks of celery
- 12 large twist pretzels
- 6 T. peanut butter or cream cheese
- 18 raisins or currants
- 12 slivered almonds

Wash the celery and cut into thirds. Fill each celery stalk with 1 tablespoon of either peanut butter or cream cheese.

For the wings, gently push 2 pretzels into the filling, next to each side and connecting in the middle, running parallel to the length of the celery stick.

Arrange the raisins or currants as eyes, nose and mouth. For antennae, push the slivered almonds into filling.



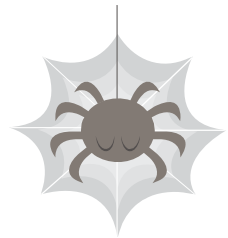
Edible Spiders

- 1 Cup chocolate chips
- 1 tsp butter or margarine
- 24 large marshmallows
- 1 (6 oz.) pkg. chow mein noodles
- 1 (12 oz) pkg. mini M&M's

Line a cookie sheet with wax paper. Stick 4 chow mein noodles into each side of marshmallow for legs and arrange on wax paper.

In a microwave safe bowl, combine chocolate chips and butter. Microwave until melted. Stir occasionally until chocolate is smooth. Pour chocolate into a resealable plastic bag.

Using scissors cut one tiny corner off the bag of melted chocolate. Drizzle over the marshmallow spiders. Attach 2 candies to each marshmallow for eyes. Chill until chocolate hardens.



Lafayette County Children's Fair

April 19

10 am-1 pm

Darlington Elem/Middle School

*A free and fun event for families *Informational booths, Performers, drawing for 3 new wagons, followed by wagon parade, and **FREE** lunch offered!



Workshops/Continuing Education

Provider Classes/Workshops

Introduction To The Child Care Profession

We will be offering this class to those who would like to become certified or licensed child care providers or those working at a Group Center. If you know someone who may be interested, call CCR&R at 1-800-267-1018 to get the registration info. The class dates and times are as follows:

Dates: April 7, 8, 15, 17, 22, 24, 29 & May 1, 5, 8, 12, 13, 20, 22

Location: 1015 Madison St. Lancaster; Family Connections Building

Time: Weekdays: 6:15- 9:15 pm.

Sat. Times to be determined

Cost: \$150 (includes class binder)

*due at the time of registration.

Check out our new website for provider training quarterly updates at:
www.familyconnectionsswwi.org

WTC—LaCrosse Classes and Workshops:

For class and workshop information Call WTC at:

(608) 785-9267

Free Workshop

April 15th 6-7:30 pm

Topic: Storytelling Techniques

For registration contact Sue Wrobel at:

wrobel.susa@uwlax.edu

"Conversations with Families about Developmental Concerns-Why is this so hard?"

Have you had concerns or questions about a child's development? Does it feel hard to raise these concerns with parents? If so, this conference is for you!

Date: April 19, 2008

Time: 8:30 -1 pm

CESA 3, Fennimore

Registry Labels available

Call: 1-800-261-0000, ex. 211 to register.

Provider Classes/Workshops

WORKSHOP

Wisconsin Model Early Learning Standards

This training will include an overview of the contents and design of the Wisconsin Model Early Learning Standards (WMELS) and how to apply them within an early learning classroom setting. Training activities will emphasize:

- How to plan for the "whole child" with WMELS as a guide.
- How to plan developmentally appropriate activities to carry out learning goals supported by the WMELS.
- How to assess children's growth and development using both formal and informal assessment strategies.

Call for Date: 1-800-267-1018

Better Kid Care Satellite Programs

Date: May 15, 2008

Topic: Improving Transition Times

Where: Dodgeville, Iowa Co. Courthouse

When: 6-8 pm.

Call: 935-0391 to register or for more information

Registry labels will be available for those attending.

Family Resource Centers

Don't forget your nearest Family Resource Center for wonderful programs, workshops, activities, and lending libraries!

Grant County 1-800-267-1018

Crawford County 1-800-241-9276

Iowa County 608-935-7300

CPR Training

Grant Co. Health Dept. - Lancaster

April 21—5:45-9:00 pm, June 4th 5:45—9:00 pm

To register call: 723-6416

Upland Hills Health, - Dodgeville

Call for class dates at: 935- 7150

Prairie du Chien Memorial Hospital

April 8- 6:00 pm

To register call: 357-2135

SW Technical College:

Call for class dates at: 1-800-362-3322



Provider Support & News

Provider Support & News

Child Care Co-Payments for the Child Care Subsidy Program
Since the establishment of the Wisconsin Shares program in 1997, the childcare subsidy program has required a co-payment responsibility by the family as a portion of the total cost of the child care authorized. This is in keeping with the federal requirement that parents funded by the Child Care Development Fund (CCDF) be responsible for a co-payment amount. When Wisconsin established the co-payment schedule, it was set up such that there was a separate co-payment responsibility for choosing licensed care versus certified child care.

New Policy:
In order to comply, the Department of Workforce Development will implement common co-payments for certified child care and licensed child care programs. The co-payments for parents who use certified child care will be increased to the same level as its currently in place for licensed child care. For example, this will mean for a family of 2 at income at 100% of the Federal Poverty Level instead of paying \$13 in co-payments they will need to pay \$19 per week. The new co-payment schedule must be in place by April 1, 2008.

For web resources, see:

<http://dwd.wisconsin.gov/childcare/wishares/policychanges2008.htm>

Grant County Provider Support Group P.A.C.T.

(Providers Actively Connecting Through Teaming)

Please mark your calendar. Everyone needs to pre-register.

Registry labels will be given for continuing education.

Call: Kristin at 854-2054 to register. All meetings are held in Lancaster or Platteville from 6:30 pm-8:30 pm.

April 10, 2008

Topic: Abuse & Neglect—Platteville,
Mound City Motor Branch meeting room, Pine St.

May 8, 2008

Topic: Death in Families—Lancaster,
Grant Co. Social Services Building

Director's Support Group

If you are interested in getting together with other group center directors to share ideas and challenges, please join us!

When: Last Tuesday of each month

Where: Unique Café, Boscobel

Contact Debby Lynch for more information at 608-647-5239

Provider Appreciation Day!!

Come to relax and laugh your cares away!!

Door Prizes and treats will be provided so come and have a much deserved night out!

Date: Thursday, May 15th

Time: 6-7:30 pm.

Where: Dodgeville

Please call 1-800-267-1018 to register by Mon. 5/5



Celebrate!!!!

Week of the Young Child - April 14-18, 2008
AND

Provider Appreciation Day- May 12, 2008

These are important events for us as child care providers, let parents, employers, and the community know what it is that you do.

Iowa Co. Grant For Child Care Programs

UW-Extension Iowa County has funds available to encourage growing and eating healthy vegetables for young children.

For grant application or information contact:

Sara Weier at: 935-0391

Substitutes Needed

If you, or someone you know would be interested in substituting at area regulated day-cares, call us for more information and to be put on a "Call List"! 1-800-267-1018

Provider Support Groups In your Area?

Call 1-800-267-1018 for more information

Calendar of Events

April 2008

Tues. 4/1	Time For You(L), Play Group (L) Fam. Lit.(P), Indoor Fun (P)
Wed. 4/2	Tot Time(P), Playgroup(B) Family Lit(P)(B)
Thurs. 4/3	Playgroup(P), Family Lit (B)
Mon. 4/7	Family Lit(M), CENTER CLOSED
Tues. 4/8	Time For You(P)Play Group (L) Fam. Lit.(P), Indoor Fun (P)
Wed. 4/9	Tot Time(P), Playgroup(B) Family Lit(P)(B)
Thurs. 4/10	Crafts for Kids 6:00-7:30(L) Playgroup(P), Family Lit(B)
Mon. 4/14	Family Lit(M)
Tues. 4/15	Playgroup(L) Music, Indoor Fun(P), Family Lit(P)
Wed. 4/16	Tot Time(P), Playgroup(B) Family Lit(P)(B), Dinner on a Budget(P)
Thurs. 4/17	Playgroup(P) music, Family Lit (B)
Mon. 4/21	Scrapbooking(P), Family Lit(M)
Tues. 4/22	Playgroup(L), Indoor Fun(P), Family Lit(P)
Wed. 4/23	Tot Time(P), Playgroup(B) Family Lit(P)(B)
Thurs. 4/24	Playgroup(P), Family Lit(B)
Mon. 4/28	Family Lit(M)
Tues. 4/29	Playgroup(L), Indoor Fun(P), Family Lit(P)
Wed. 4/30	Tot Time(P), Playgroup(B), Family Lit(P)(B)

June 2008

Mon. 6/2	Family Lit(M)
Tues. 6/3	Playgroup(L), Time For You(L)
Wed. 6/4	Family Lit(P)(B), NO Playgroup(B)
Thurs. 6/5	Playgroup(P) at Legion Park
Mon. 6/9	Family Lit(M)
Tues. 6/10	Playgroup(L), Time ForYou(P)
Wed. 6/11	Playgroup(B) Family Lit(B)
Thurs. 6/12	Playgroup(P), Family Lit (B)
Mon. 6/16	Family Lit(M)
Tues. 6/17	Playgroup(L) music
Wed. 6/18	Playgroup(B) Family Lit(B)
Thurs. 6/19	Playgroup(P) music
Mon. 6/23	Family Lit(M)
Tues. 6/24	Playgroup(L)
Wed. 6/25	Playgroup(B) Family Lit(B)
Thurs. 6/26	Playgroup(P), Family Lit (B)
Mon. 6/30	

May 2008

Thurs. 5/1	Playgroup(P), Family Lit(B)
Sat. 5/3	Just Me & my Dad 10-11:30(P)
Mon. 5/5	Family Lit(M)
Tues. 5/6	Playgroup(L), Indoor Fun(P), Family Lit(P),Time For You(L)
Wed. 5/7	Tot Time(P), Playgroup(B) Family Lit(P)(B)
Thurs. 5/7	Playgroup(P), Family Lit(B)
Sat. 5/10	CESA, Having Difficult Conversations, Fennimore Family Lit(M)
Mon. 5/12	Playgroup(L) music, Indoor Fun(P), Family Lit(P), Pamper Mom(P)
Tues. 5/13	Tot Time(P), Playgroup(B) Family Lit(P)(B),Terrific Toddlers(P)
Wed. 5/14	Playgroup(P) music, Family Lit(B) Scrapbooking(P), Family Lit(M)
Thurs. 5/15	Playgroup(L), Indoor Fun(P), Family Lit(P), ADHD (P)
Mon. 5/19	Tot Time(P), Playgroup(B) Family Lit(P)(B), S.P.I.N (P)
Tues. 5/20	Playgroup(P), Family Lit(B) Playgroup(L), Indoor Fun(P), Family Lit(P), Boredom Busters(P)
Wed. 5/21	Tot Time(P), Playgroup(B) Family Lit(P)(B), S.P.I.N (P)
Thurs. 5/22	Playgroup(P), Family Lit(B)
Tues. 5/27	Playgroup(L), Indoor Fun(P), Family Lit(P), Boredom Busters(P)
Wed. 5/28	Tot Time(P), Playgroup(B) Family Lit(P)
Thurs. 2/29	Playgroup(P), Family Lit(B)

Family Literacy

For more information about our Family Literacy and Adult Basic Education programs please call Family Connections at 1-800-267-1018 or 608-723-3400.

Platteville Hours: Tuesdays and Wednesdays 3:00-7:30 pm
O.E. Gray ELC

Boscobel Hours: Wednesdays 9:00-Noon (Playgroup too!)
Thursdays 1:00-7:00 pm
Boscobel Public Library Basement

Muscoda Hours: Mondays 1:00-7:00 pm
St. John's Elementary School

Respite Care

Respite care is available for any family that would like relief from the day to day stressors of parenting. Please call Family Connections at 1-800-267-1018 or 608-723-3400 for more information.

*****Providers***** We are always looking for certified and licensed providers to help with Respite Care. Please call our Respite Coordinator, Kathy Wetter, for details 608-723-3400.

Family/Provider Activities

Spring Fun



Activities/Crafts:

Mock Stained Glass Windows: What you need, 18 by 24 inch black construction paper, colored cellophane or tissue, chalk or white crayon, scissors, paper cement or glue. Fold the black paper in half. With chalk draw a design on one side of the fold. Make the design bold and simple, the pieces holding the design together must be thick. Cut the design segments out of both pieces of the folded black paper. Now cut pieces of tissue or cellophane and fit them behind each opening. Repeat colors in some areas of the symmetrical design to add interest to you composition. Cement the colored paper on the side used for sketching. Place in windows for a nice affect.

Paper Bag Birds: What you need, 2 paper bags, newspaper, strings, assorted colored paper, scissors, glue, felt tip markers. Crumple newspaper lightly into a ball and place it in one of the bags. Tie it closed, this is the head of the bird. Again crumple newspaper, but this time make the ball larger for the body. Put the newspaper ball in the second bag and now tie this to the head shaped bag. Cut wings, tail, beak, eyes and legs out of colored paper and cement them to the body of the bird. Add felt tip marks to accentuate feathers and other areas of the body. Attach string to the body and hang them from a light fixture or other ceiling fixture.

Cylinder Birds: What you need, toilet paper roll or piece of 12 by 18 paper (any color), stapler, scissors, scraps of assorted colored paper, glue, felt tip marker. Use the toilet paper roll or staple the paper into a cylinder shape, which will become the body of a bird. Cut colored paper shapes into wings, beak, eyes, feet, tail, and crest for the bird and attach them to the cylinder with glue. Cut chips of paper for breast feathers, and curl the tail and crest for the bird with very impressive plumage. Add felt tip marker to portions of the body for more prominence.


Bouquet of Flowers: What you need, Styrofoam bowl, pipe cleaners, pastel colored cupcake holders, scissors, and tape. Turn Styrofoam bowl upside down and insert three or more pipe cleaners (preferable green but doesn't have to be). Fold a piece of the pipe cleaner over on the inside of the bowl and then tape it down. Turn the bowl back over to add the flowers and leaves to the stems. Make the flowers out of the pastel colored cupcake holders, using two or more to make a fuller flower. Center them on the top of each stem. Punch a hole through and bending the pipe cleaner over to hold the cupcake holder in place. The leaves can be made out of pieces of pipe cleaner.

Music and Recipes

Finger Play is a lot of fun for kids of all ages. When reading the words, make the actions with your hands. The following was adopted from a book found in our Lending Library, Finger Plays for Home and School; Preschool - Grade 1.

A Little Brown Seed

A little brown seed
Snug and warm in its bed.
The big yellow sun
Shines so bright overhead.
The rain gently falls.
Can you hear the wind blow?
"Wake up," calls the breeze
"Little seed, start to grow!"



See the Little Spider

See the little spider
Climbing on the wall
She spins a thread of silk
And then she starts to fall.
Sliding down the thread
And dropping to the floor,
Then up she climbs again,
To build her web some more.
When spider's work is done,
She watches with her eyes,

Family Connections appreciates any donations of items, time, or money that families, businesses, or individuals can make to help offset other expenses involved in helping us meet our goals. Thank You!

Wish List

- Kleenex/Tissues
- Baby wipes
- Napkins
- Frozen 100% Juice
- Paper Towels
- Snacks-nonperishable
- Paper plates (large &small)
- Hand wipes
- Chlorox wipes
- School glue
- Shaving cream
- Envelopes
- Liquid dish soap
- Postage Stamps
- Food coloring
- Toilet tissue
- Dixie cup
- Thank you cards
- Copy paper
- ***-Old/Used cell phones
- ***-Old/Used printer ink cartridges



Family Connections

of Southwest Wisconsin

1015 S. Madison St. Lancaster, WI 53813
155 W. Lewis St. Platteville, WI 53818
1-800-267-1018 608-723-3400
www.familyconnectionsswwi.org

PRSR STD
AUTO
US POSTAGE PAID
LANCASTER, WI
PERMIT NO. 18

A Joint Service of These Fine Agencies:



Platteville Thrift Shop



Children's Trust Fund

Grant supported program



Family Connections

Board of Directors:

Robin Bernhard	Jeanne Gander-Barr	Stacey Place
Lynn Crooks	Martha Harrison	Scot Simpson
Lori Dilley	Rita Luna	Tonia Wagner
Bev Doll	Peggy Olive	Laurie Walker
Karen Ehle-Traastad	Adam Rasmussen	Sarah Weier

Staff

Julie Statz, Executive Director
 Cathy Smith, Resource and Referral Specialist
 Jim Lindell, Administrative Assistant
 Kathy Wetter, Respite, Outreach & Food Program
 Coordinator
 Marla Holl, Early Childhood Specialist
 Leslie Clachrie, Early Childhood Specialist

Website:

www.familyconnectionsswwi.org

Make sure you check our new and improved website! Find resources and ideas for parents, childcare providers, and family professionals.

Check out:

- *Parenting/Provider Tips
- *Family Connections Updates
- *Calendar
- NEW *Parent/ProviderForum
- NEW *Lending Library Listing
- *Resource Directory
- *Choosing Quality Child Care
- AND MORE.....